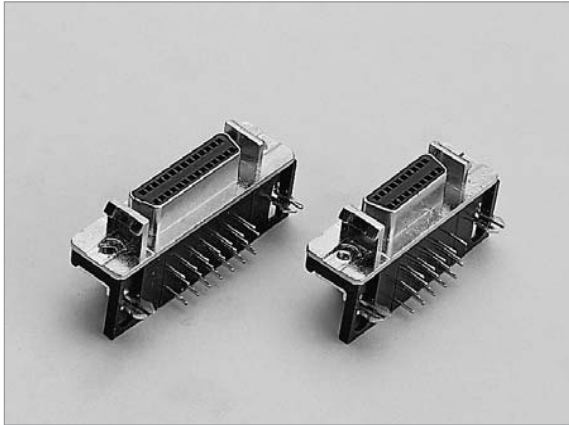


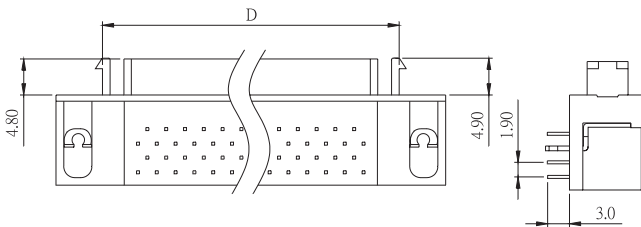
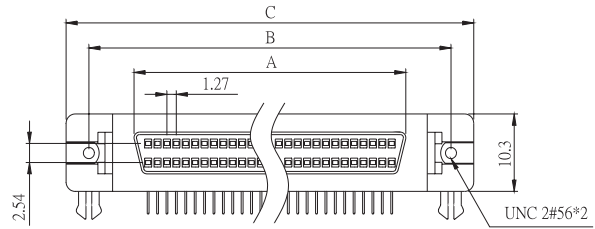
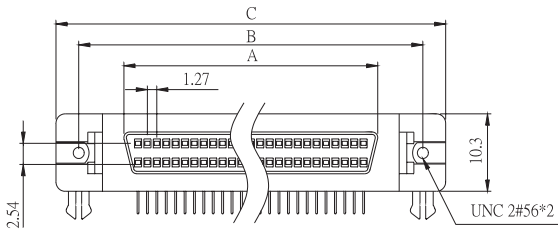
E19

SCSI-II D-SUB PCB RIGHT ANGLE

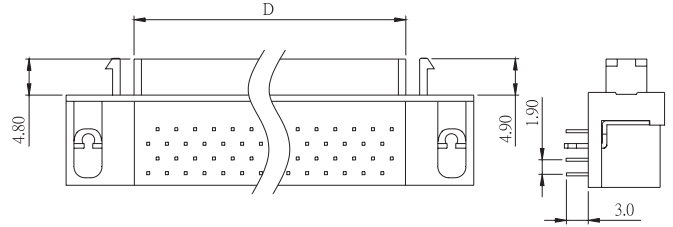


POSITION	A	B	C	D
26F	19.06	31.26	37.41	24.86
50F	34.30	46.50	52.65	40.10

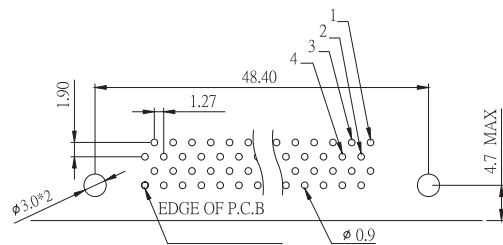
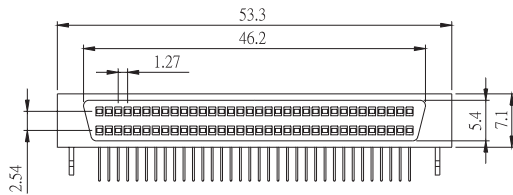
POSITION	A	B	C	D
20F	15.25	27.45	33.60	21.05
28F	20.33	32.53	38.68	26.13
40F	27.95	40.15	46.30	33.75
60F	40.65	52.85	59.00	46.45
68F	45.73	57.93	64.80	51.53
80F	53.35	65.55	71.70	59.15
100F	66.05	78.25	84.40	71.85
120F	78.75	90.95	97.10	84.55



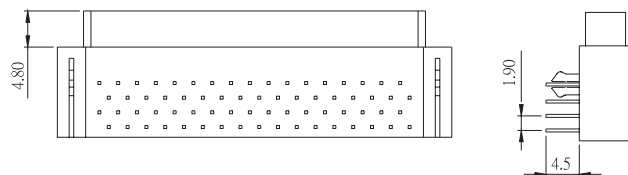
FOR : 26F.50F



FOR : 20F.28F.40F.68F.80F.100F.120F



LAST POSITION
ALL PLASTIC TYPE LAYOUT PATTERN



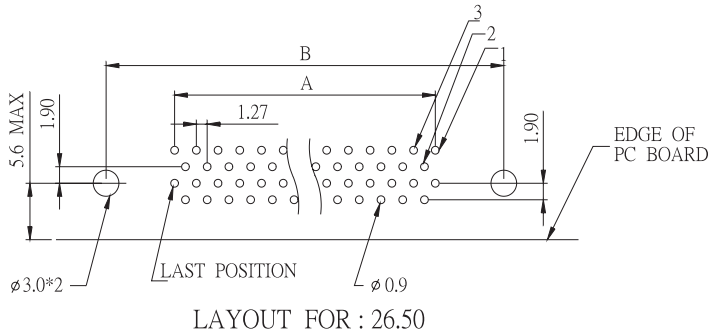
ALL PLASTIC TYPE FOR 68 POSITION FEMALE



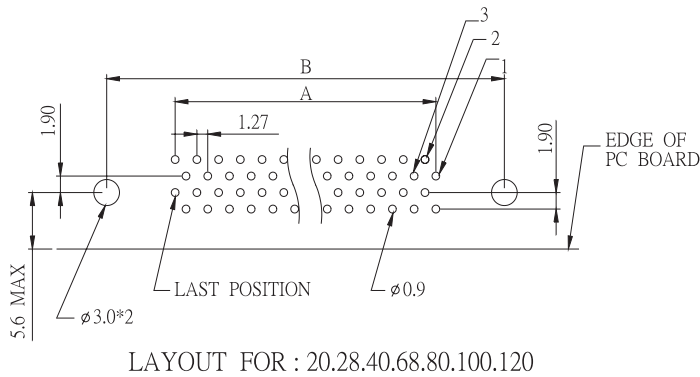
E19

SCSI-II D-SUB PCB RIGHT ANGLE

P.C.BOARD LAYOUT PATTERN



POSITION	A	B
26F	15.26	31.26
50F	30.50	46.50



POSITION	A	B
20F	11.45	27.45
28F	16.53	32.53
40F	24.15	40.15
60F	36.85	52.85
68F	41.93	57.93
80F	49.55	65.55
100F	62.25	78.25
120F	74.95	90.95

E

HOW TO ORDER:

E19 - - - - - - - - -

1.NO. OF CONTACT	2.CONTACT TYPE	3.CONTACT PLATING	4.SHELL OPTION
20 26 28 40 50 60 68 80 100 120	F: FEMALE	T: TIN PLATED S: SELECTIVE G: GOLD FLASH A: 5u" INCH GOLD B: 10u" INCH GOLD C: 15u" INCH GOLD D: 30u" INCH GOLD	A: METAL SHELL B: ALL PLASTIC
5.MOUNTING METHOD	6.PARTS OPTION	7.BOARDLOCK OPTION	8.INSULATOR COLOR
A: THREAD INSERT 2-56 UNC B: THREAD INSERT 4-40 UNC C: THREAD INSERT M3 D: THREAD INSERT M2.6 O: NON OPTION	A: WITH FRONT LATCH B: WITHOUT FRONT LATCH	A: BOARDLOCK (Z-SHAPE) B: L-SHAPE	1. BLACK