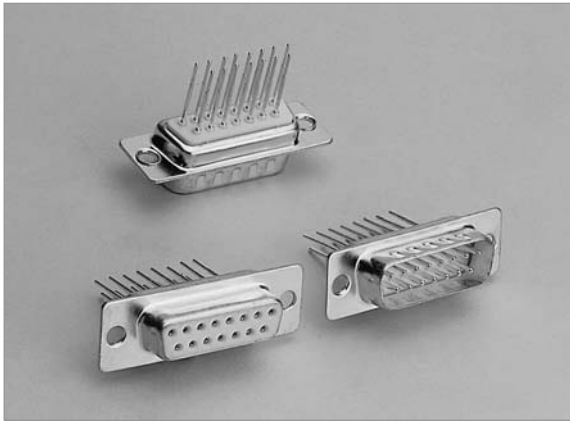


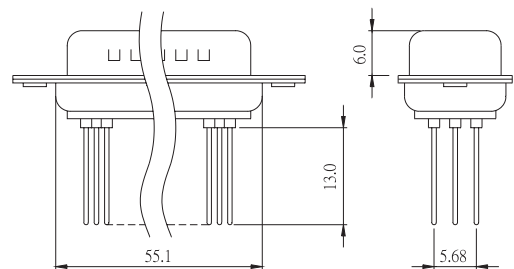
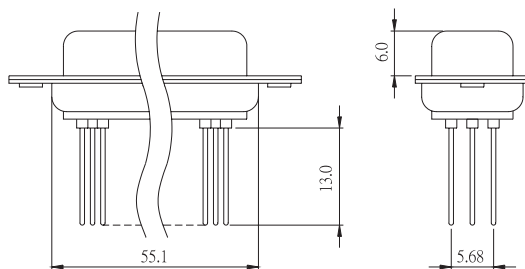
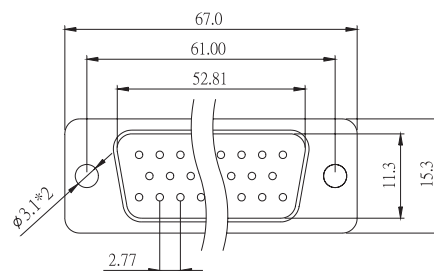
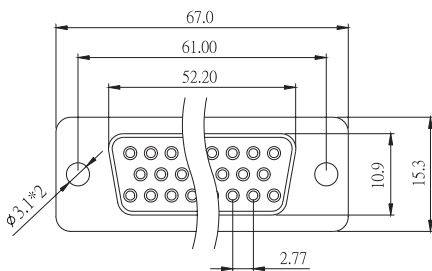
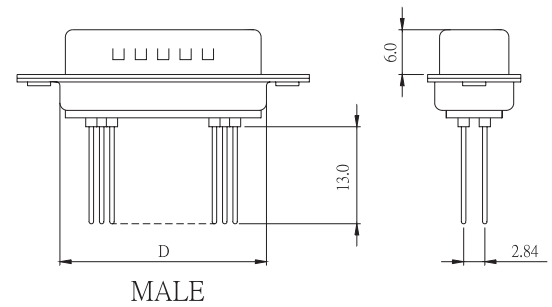
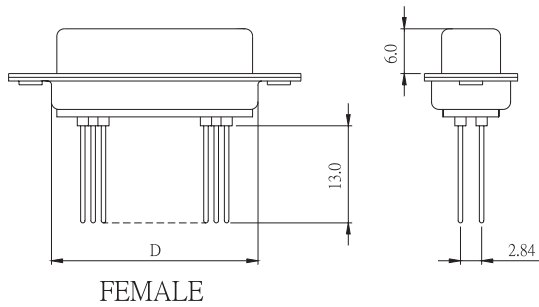
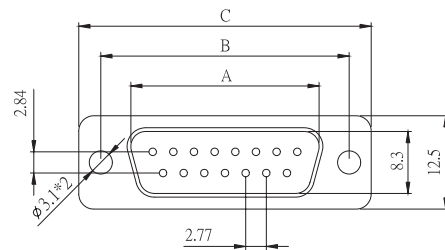
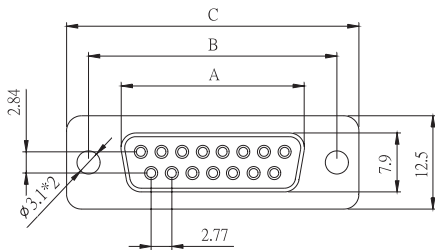
# E08

## D - SUB PCB STRAIGHT WIRE WRAPPING (MACHINED PIN)



POSITION	A	B	C	D
9F	16.30	25.00	30.8	19.2
15F	24.60	33.30	39.2	27.7
19F	30.00	38.86	44.8	32.8
23F	35.30	44.30	50.3	38.3
25F	38.30	47.10	53.1	41.1
37F	54.80	63.50	69.4	57.3

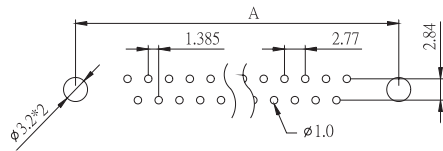
POSITION	A	B	C	D
9M	16.92	25.00	30.8	19.2
15M	25.25	33.30	39.2	27.7
19M	30.60	38.86	44.8	32.8
23M	35.90	44.30	50.3	38.3
25M	38.96	47.10	53.1	41.1
37M	55.42	63.50	69.4	57.3



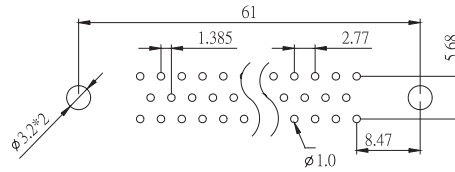
# E08

## D - SUB PCB STRAIGHT WIRE WRAPPING (MACHINED PIN)

### P.C.BOARD LAYOUT PATTERN



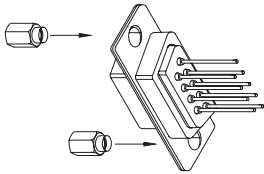
FEMALE / MALE



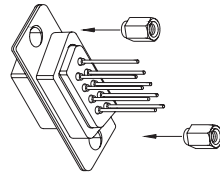
50 POSITION FEMALE / MALE

POSITION	A
9P	25.00
15P	33.30
19P	38.86
23P	44.30
25P	47.10
37P	63.50

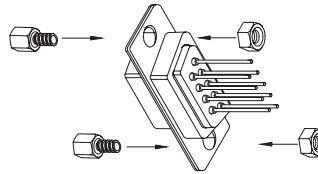
### PROCESS OPTION



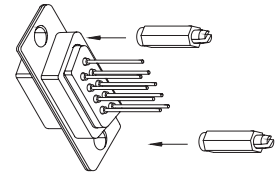
FRONT RIVET



REAR RIVET



HEX SCREW + HEX NUT



BOARDLOCK-NUT RIVET

### HOW TO ORDER:

E08 -  -  -  -  -  -  -  -  -

1.NO. OF CONTACT	2.CONTACT TYPE	3.CONTACT PLATING	4.SHELL PLATING
09 15 19 23 25 37 50	M: MALE F: FEMALE	T: TIN PLATED S: SELECTIVE G: GOLD FLASH A: 5u" INCH GOLD B: 10u" INCH GOLD C: 15u" INCH GOLD D: 30u" INCH GOLD	T: TIN N: NICKEL P: TIN + DIMPLE Q: NICKEL + DIMPLE Z: ZINC (CHROMATIC)
5.MOUNTING METHOD	6.ACCESSORIES	7.CONTACT LENGTH	8.INSULATOR COLOR
A: THROUGH HOLE B: HEX SCREW + HEX NUT C: 3.8mm OPEN HEX RIVET D: 5.8mm OPEN HEX RIVET E: 4.8mm CLOSE HEX RIVET F: 5.8mm CLOSE HEX RIVET G: 5.8mm CLOSE ROUND RIVET H: 7.1mm ROUND THREAD RIVET	I: 5.8mm BOARDLOCK RIVET J: 10mm BOARDLOCK RIVET K: 2.5mm OPEN HEX RIVET	A: NON ACCESSORIES B: FRONT RIVET C: FRONT RIVET ADD SCREW D: FRONT RIVET FIX SCREW E: REAR RIVET F: REAR RIVET ADD SCREW G: REAR RIVET FIX SCREW	A: 5.5mm B: 7.1mm C: 8.5mm D: 12.3mm E: 13.0mm
			1. BLACK 2. GREY 3. BLUE 5. WHITE