

C55

FINE PITCH BOX HEADER STRAIGHT SMT TYPE (1.27mm * 2.54mm)

PITCH: 1.27mm

SPECIFICATIONS

Material

Insulator : Nylon 6T, glass reinforced, rated UL 94V-0

Contact : Phosphor Bronze

Electrical

Current Rating : 1 Amp

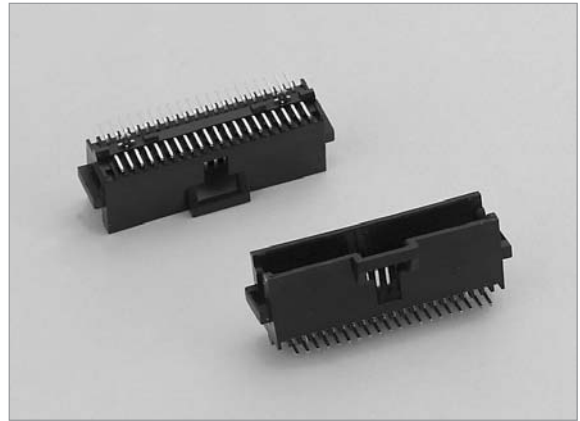
Contact Resistance : 30 mΩ max.

Insulation Resistance : 1000 MΩ min.

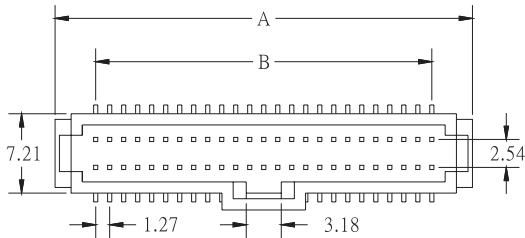
Dielectric Withstanding Voltage :250V AC for 1minute

Operating Temperature : -40°C to +105°C

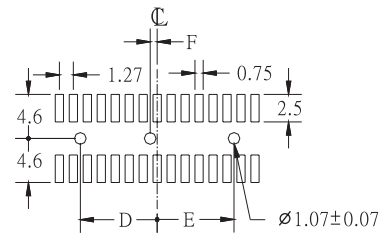
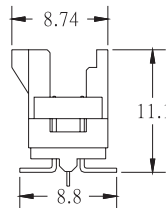
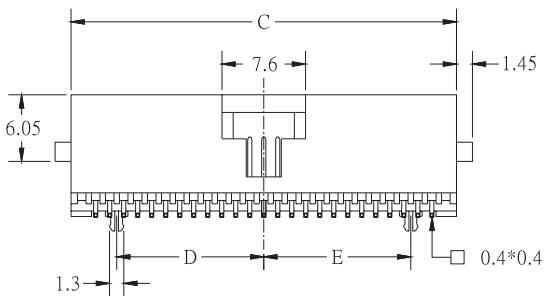
◆ Mating Suggestion : A06 series.



C



POSITION	A	B	C	D	E	F
10	12.54	5.08	9.64	0.635	---	---
14	15.08	7.62	12.18	1.905	---	---
16	16.35	8.89	13.45	2.54	2.54	---
20	18.89	11.43	15.99	3.81	3.81	---
24	21.43	13.97	18.53	5.08	5.08	---
26	22.70	15.24	19.80	5.715	5.715	---
30	25.24	17.78	22.34	6.985	6.985	---
34	27.78	20.32	24.88	8.255	8.255	---
40	31.59	24.13	28.69	10.16	10.16	---
44	34.13	26.67	31.23	11.43	11.43	---
50	37.94	30.48	35.04	13.335	13.335	---
60	44.29	36.83	41.39	16.51	16.51	0.00
64	46.83	39.37	43.93	17.78	17.78	0.00
68	49.37	41.91	46.47	19.05	19.05	0.00
72	51.91	44.45	49.01	20.32	20.32	0.00
80	56.99	49.53	54.09	22.86	22.86	0.00
100	69.69	62.23	66.79	29.21	29.21	0.00



RECOMMENDED P.C.B LAYOUT

HOW TO ORDER:

C55 - 1 - 2 - 3 - 4

1.NO. OF CONTACT	2.CONTACT MATERIAL	3.CONTACT PLATING	4.INSULATOR COLOR
10 14 16 20 24 26 30 34 40 44 50 60 64 68 72 80 100	B: PHOSPHOR BRONZE	T: TIN PLATED S: SELECTIVE G: GOLD FLASH A: 5u" INCH GOLD B: 10u" INCH GOLD C: 15u" INCH GOLD D: 30u" INCH GOLD	1. BLACK