

# C05i

## BOX HEADER SMT TYPE WITH UNDERCUT

PITCH: 2.0mm

### SPECIFICATIONS

#### Material

Insulator : Nylon 6T, glass reinforced, rated UL 94V-0

Contact : Brass

#### Electrical

Current Rating : 1 Amp

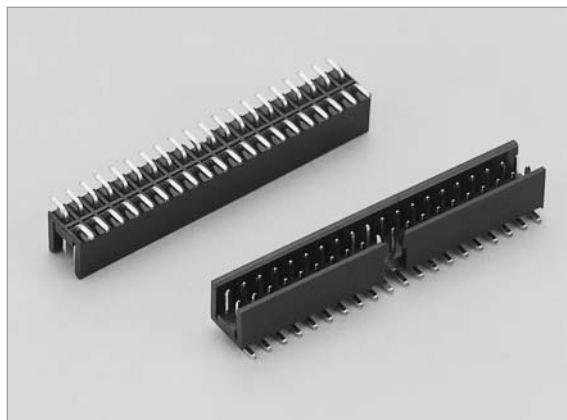
Contact Resistance : 30 mΩ max.

Insulation Resistance : 3000 MΩ min.

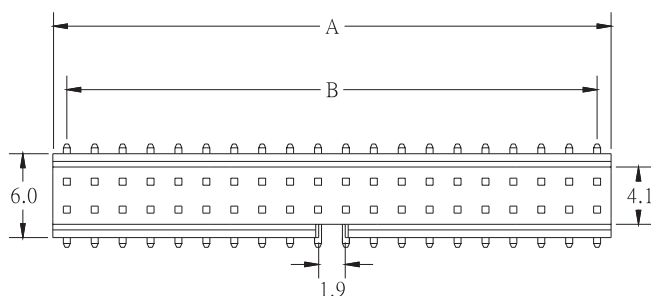
Dielectric Withstanding Voltage : 500V AC for 1minute

Operating Temperature : -40°C to +105°C

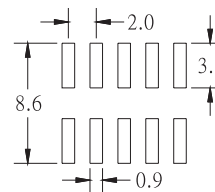
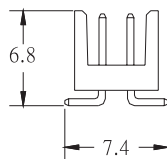
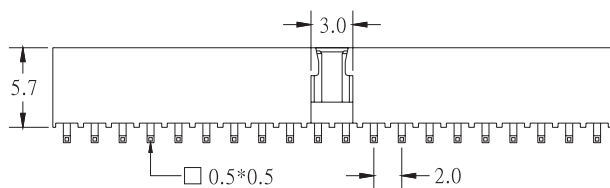
◆ Mating Suggestion : A05c series.



C



| POSITION | A    | B    |
|----------|------|------|
| 6        | 6.0  | 4.0  |
| 8        | 8.0  | 6.0  |
| 10       | 10.0 | 8.0  |
| 12       | 12.0 | 10.0 |
| 14       | 14.0 | 12.0 |
| 16       | 16.0 | 14.0 |
| 20       | 20.0 | 18.0 |
| 22       | 22.0 | 20.0 |
| 24       | 24.0 | 22.0 |
| 26       | 26.0 | 24.0 |
| 30       | 30.0 | 28.0 |
| 34       | 34.0 | 32.0 |
| 40       | 40.0 | 38.0 |
| 44       | 44.0 | 42.0 |
| 50       | 50.0 | 48.0 |
| 68       | 68.0 | 66.0 |



RECOMMENDED P.C.B LAYOUT

### HOW TO ORDER:

C05i -  1 -  2 -  3 -  4

| 1.NO. OF CONTACT   | 2.CONTACT MATERIAL | 3.CONTACT PLATING   | 4.INSULATOR COLOR |
|--|--------------------|---|-------------------|
| 06 08 10 12 14<br>16 20 22 24 26<br>30 34 40 44 50<br>68 | A: BRASS           | T: TIN PLATED<br>S: SELECTIVE<br>G: GOLD FLASH<br>A: 5u" INCH GOLD<br>B: 10u" INCH GOLD<br>C: 15u" INCH GOLD<br>D: 30u" INCH GOLD | 1. BLACK          |