

A32a HALF PITCH DIP PLUG (1.27mm * 1.27mm)

PITCH: 1.27mm

SPECIFICATIONS

Material

Insulator : PBT, glass reinforced, rated UL 94V-0

Contact : Phosphor Bronze

Electrical

Current Rating : 0.5 Amp

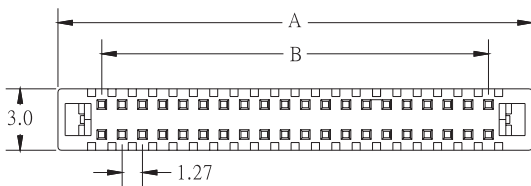
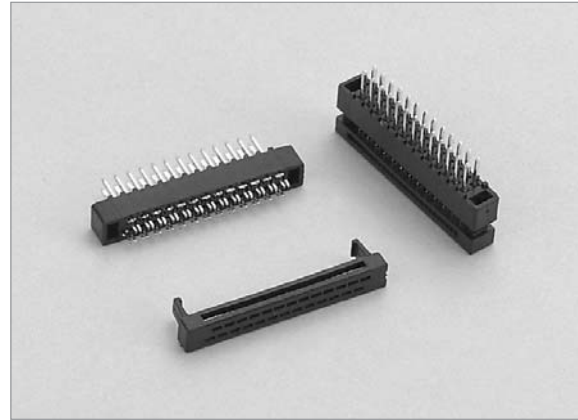
Contact Resistance : 30 mΩ max.

Insulation Resistance : 1000 MΩ min.

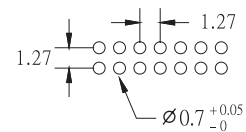
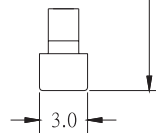
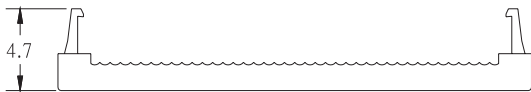
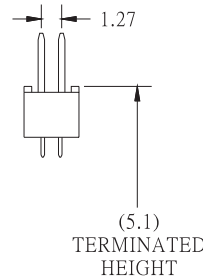
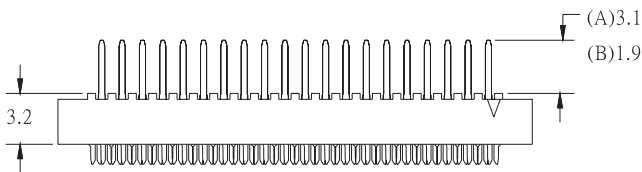
Dielectric Withstanding Voltage : 250V AC for 1minute

Operating Temperature : -40°C to +105°C

♦ Terminated with 0.635mm pitch flat ribbon cable.



POSITION	A	B
10	10.5	5.08
12	11.8	6.35
14	13.1	7.62
16	14.3	8.89
20	16.9	11.43
22	18.1	12.70
26	20.7	15.24
30	23.3	17.78
34	25.8	20.32
40	29.6	24.13
44	32.1	26.67
50	35.9	30.48



RECOMMENDED P.C.B. LAYOUT

HOW TO ORDER:

A32a - - - - -

1.NO. OF CONTACT	2.CONTACT MATERIAL	3.CONTACT PLATING	4.PIN LENGTH	5.INSULATOR COLOR
10 12 14 16 20 22 26 30 34 40 44 50	B : PHOSPHOR BRONZE	T: TIN PLATED S: SELECTIVE G: GOLD FLASH A: 5u" INCH GOLD B: 10u" INCH GOLD C: 15u" INCH GOLD D: 30u" INCH GOLD	A: 3.1mm B: 1.9mm	1.BLACK